

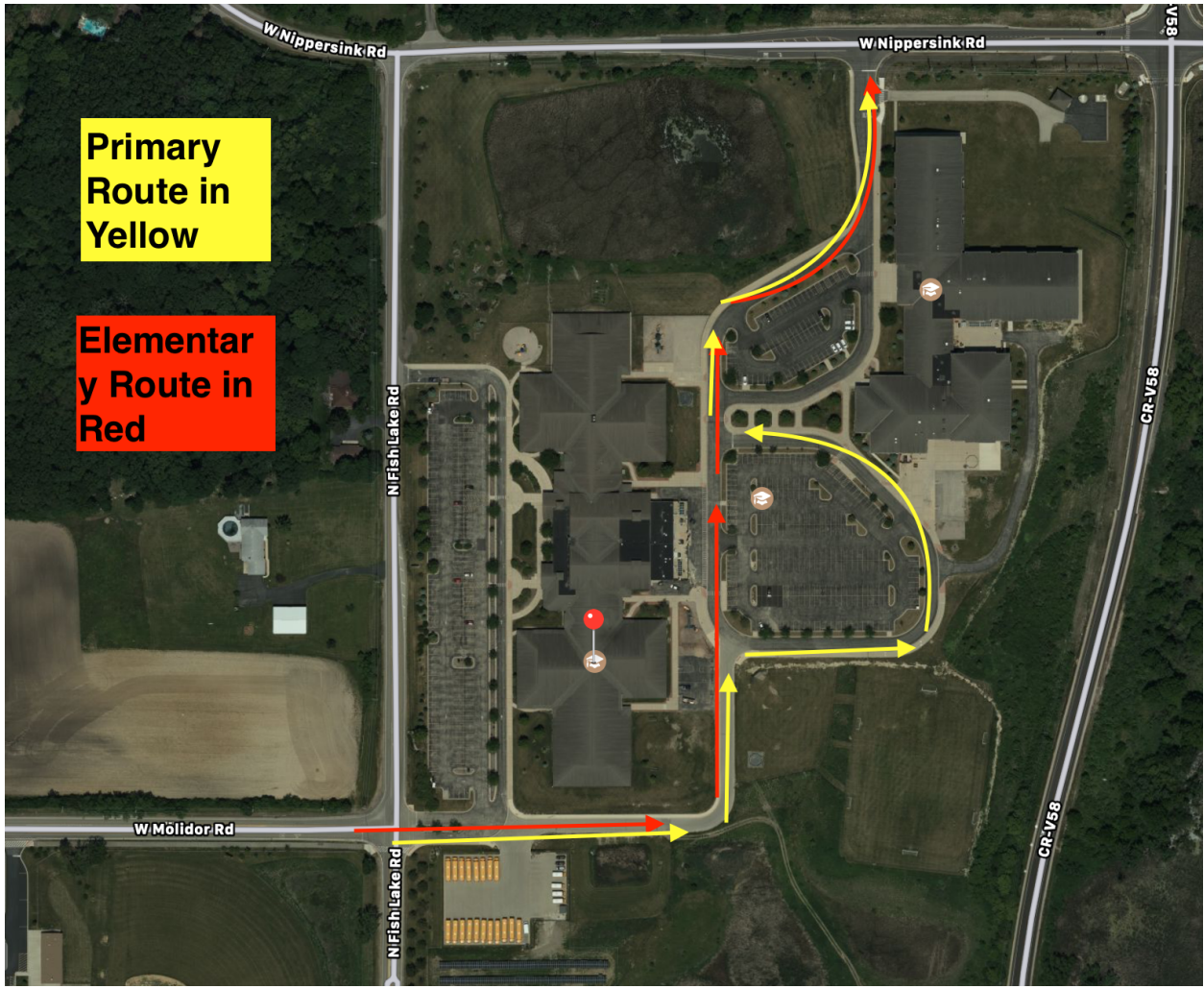
Primary & Elementary  
Drop Off and Pick Up Procedures for In Person Learning

Drop Off AM

- Starts at 8:30 am
  - Drive Slowly (5-10 mph)
  - Please follow these procedures.
1. Enter through the Fish Lake Road entrance (near bus lot).
  2. Follow to the back of the school.
  3. Wait in the drop off space for a staff member to approach your vehicle.
  4. Students will enter at the entry doors.

Pick Up 3:30PM dismissal time

- Arrive no earlier than 10 minutes prior to dismissal. (We will be using an app/website that registers your family number from your placard and need to have staff input that information into the system.)
  - Drive slowly (5-10 mph) while on campus.
  - Please follow these procedures
1. Hang your placard with the number facing out (clear to see) from the rearview mirror.
  2. Enter through the Fish Lake Road entrance.
  3. Follow along to the back of the parking lot.
  4. You will be directed by staff/cones to follow along until you arrive in the pick up area. Please be patient and wait in line until you are directed to move forward to the pick up area.
  5. Students will be waiting in the pick up area for you to arrive.
  6. Your student will get into your vehicle. If you need to assist your student with their seat belt please pull into the Middle School parking lot.
  7. When exiting the parking lot, you must turn right onto Nippersink Road.



Map of routes.